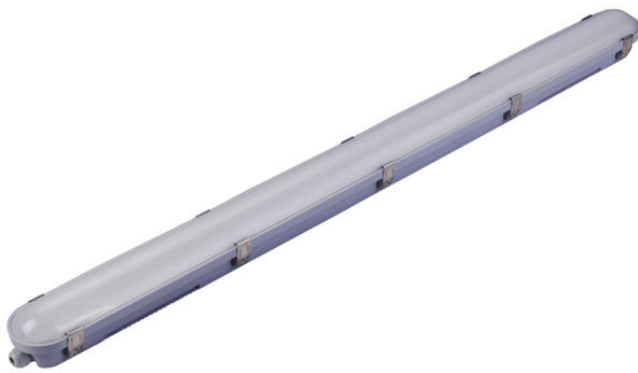


WEATHERPROOF LIGHT

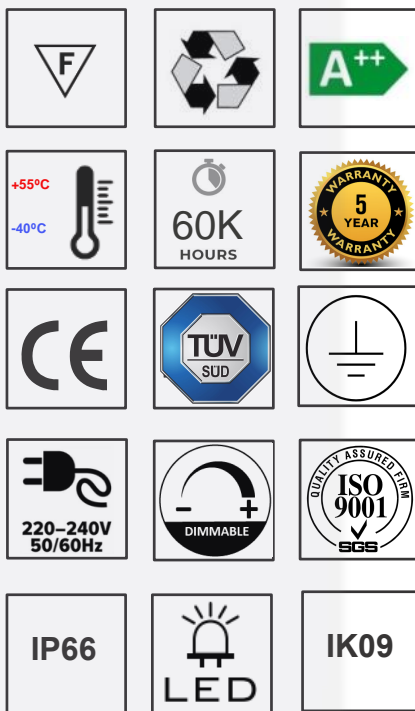


WPL02 L'illuminazione stradale è una scelta economica e sostenibile per le città di oggi. progettazione della distribuzione della luce, fornire rapidamente soluzioni di illuminazione. Controlla efficacemente la fuoriuscita, la perdita di luce, l'uniformità e la distribuzione della luce.

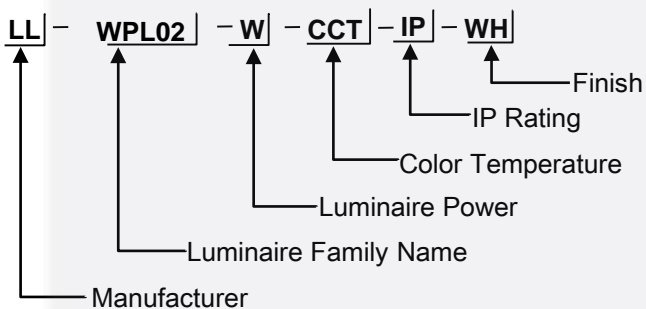
WPL02 is Ceiling and wall-mounted luminaires for damp or corrosive environments and sheltered outdoor areas; also recommended for severe mechanical stability demands with different wattage, lumen, beam angle, CRI, and CCT option.

TECHNICAL DATA

Type	Weatherproof
Installation	Surface / Suspended
Housing	Polycarbonate
Processing	Powder Coated
Diffuser	Polycarbonate
Emergency Unit	On request
Light Emission Direction	Symmetrical
Glow Wire Test	850°
Safety Class	1
Direct Mounting on Normal Flammable Surface	Yes
Driver Included	Yes
Adjustable	No



ORDERING CODE



Code No.	System Power (W)	Lumen Output (lm)	Luminaire Efficacy (lm/W)	CRI
<input type="checkbox"/> WPL02-30W	30	3300	110	>90
<input type="checkbox"/> WPL02-35W	35	3850	110	>90
<input type="checkbox"/> WPL02-40W	40	4400	110	>90
<input type="checkbox"/> WPL02-45W	45	4950	110	>90
<input type="checkbox"/> WPL02-50W	50	5500	110	>90
<input type="checkbox"/> WPL02-60W	60	6600	110	>90

COLOR TEMPERATURE OPTION






2700K 3000K 4000K 5000K 6000K

BEAM ANGLE OPTION

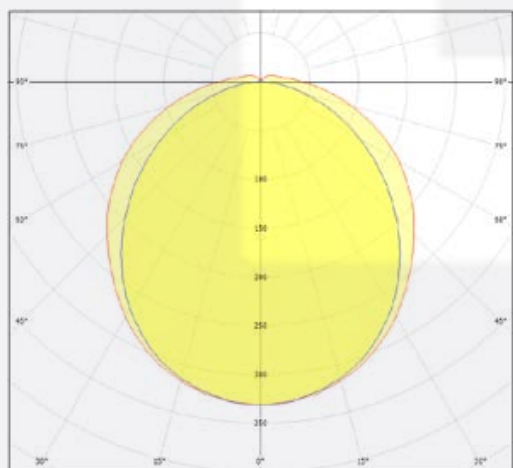
120°



CONTROL OPTION

- DD DALI DIM 
- D1 0-10V DIM 
- PD Phase Cut DIM 
- D0 ON/OFF

PHOTOMETRIC




LED CHIPS

OSRAM **CREE** 

LED DRIVERS

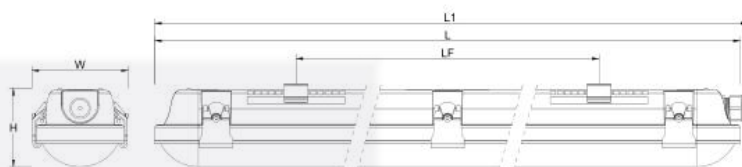
MW MEAN WELL **TRIDONIC** **EAGLECRISE** **HEP** *power for light*
laLuce **TCLEB** **PHILIPS** **OSRAM**

FINISH OPTION

- GR-Grey 

DIMENSION

L (mm)	W (mm)	H (mm)	LF (mm)
1190	95	75	820



NOTE: LED CHIPS & LED DRIVERS as per manufacturer's recommendations.